



Operation Guide

iSmartViewPlus V1.0.2
(For Mac os)

July, 2017






Rev1.0

Statement




If the user manual doesn't help you to resolve the problem, please contact us via our website for technical support.

Notice

1、 Installation Environment

-  Keep away from the places of high-temperature, heat sources and direct sunlight.
-  Keep away from water and if wet, cut off the power immediately.
-  Avoid using in a damp environment; the reference range for operation humidity is below 85%RH.
-  Avoid using in too hot or too cold environments, the reference range for operation temperature is $-10^{\circ}\text{C} \sim +50^{\circ}\text{C}$.
-  Please install it horizontally or wall mount, avoid strenuous vibration and do not place other items on top of the unit.

2、 Transport and Handling

-  Please handle the item with care.
-  Do not use in areas around condensation.
-  Please disconnect the item from the mains before moving.



Notice:

1. Be careful not to damage the camera or subject it to strong impacts or shocks.
2. Do not touch the optical components for the image sensor, such as the lens, if necessary, please place a clean and moistened cloth with alcohol and wipe the dirt gently; When not in use, please place the dust cover on to the item to protect the image sensor.
3. Do not aim the camera directly into the sun or at other intense light sources that could affect the image quality, this will also shorten the service life for the image sensor.
4. Keep away from laser when it is working, otherwise the image sensor can be damaged.
5. If the equipment is not working properly, please contact the store or the service centre, do not disassemble or modify the equipment in any way.

Index

Install iSmartViewPlus.....	5
iSmartViewPlus Application Introduce.....	5
Add camera.....	6
Add camera in Lan.....	6
Manually add camera.....	6
play/stop Video.....	7
Camera Settings.....	8
Edit Device.....	8
Advanced settings.....	8
Device Info.....	8
Time setting.....	9
User setting.....	9
Wifi setting.....	9
SD/TF setting.....	10
Other setting.....	10
Alarm setting.....	11
Motion Detection.....	11
Audio Detection.....	12
Alarm Action.....	12
Email setting.....	12
FTP setting.....	13
Alarm Time.....	13
Web Access.....	13
Multi-view.....	14
Local setting.....	14
scheduled Recording.....	15
Playback.....	16
SDcarRecord.....	16
Lock.....	17

iSmartViewPlus Introduce

iSmartViewPlus is a Cloud IP camera centralization management software provided by the manufacturer. It provides the central control of monitoring, video capture, record, alarm detection, etc for multiple IP cameras on LAN or WAN.

iSmartViewPlus support both of Mac OS and Windows OS.

The iSmartViewPlus features:

- To support the MAC platform;
- To support SmartP2P smart cloud platform camera;
- To support IP+ port connection (only X series of equipment support);
- To support real-time video Watch
- To support the local manual, video program;
- To support local video file playback;
- To support SD/ TF card remote video file playback (only support P2P);
- To support voice, voice intercom, PTZ control;
- To support the clock settings, user settings, Wi-Fi settings, SD/ TF card settings advanced settings;
- To support IO, motion detection, sound, temperature and humidity (need to support the function of the corresponding machine) and alarm settings;

Required PC running configuration:

For using the iSmartViewPlus software stably, recommend minimum PC configuration as below:

MAC:

CPU: Dual core CPU

RAM: above 4G

Hard Disc: above 500G

Operation System: Mac OS X 10.9

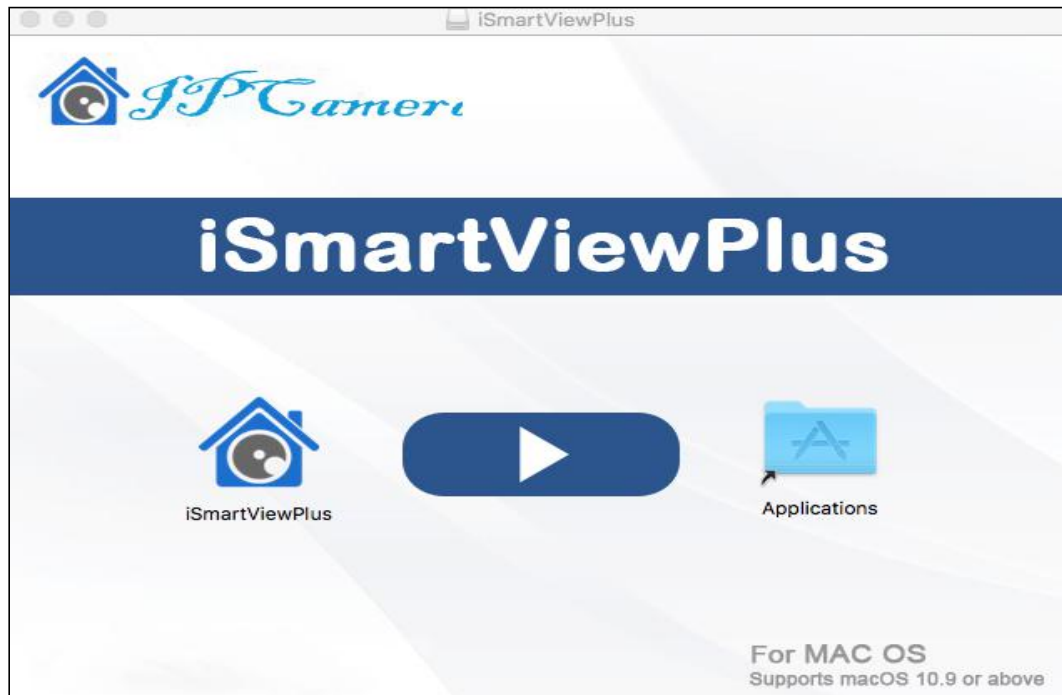
Monitor resolution: $\geq 1024*768$

Install iSmartViewPlus

Get installation software of iSmartViewPlus

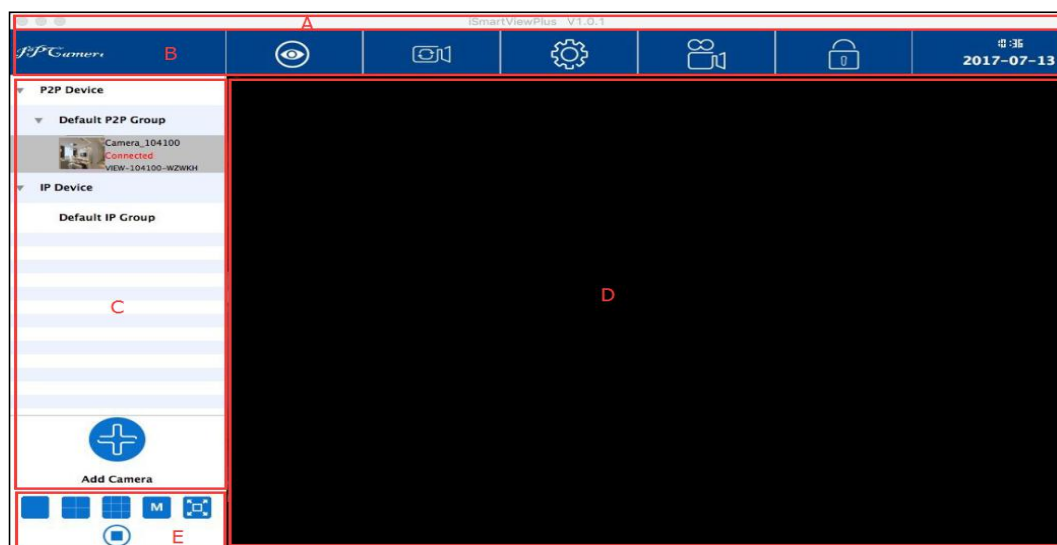
- Get it from attached CD
- Get it from our company website (<http://cd.ipcamdata.com>)

Double click iSmartViewPlus.Dmg file to open it, and then slide iSmartViewPlus to copy to computer by arrow direction.



Double click shortcut icon for iSmartViewPlus to run the iSmartViewPlus software

iSmartViewPlus Application Introduce



A: Title bar

B: Master menu

C:Equipment management area

D: Real-time video preview

E:Window control area

Add Camera

Add camera in Lan



1) Tap **Add Camera** to add camera

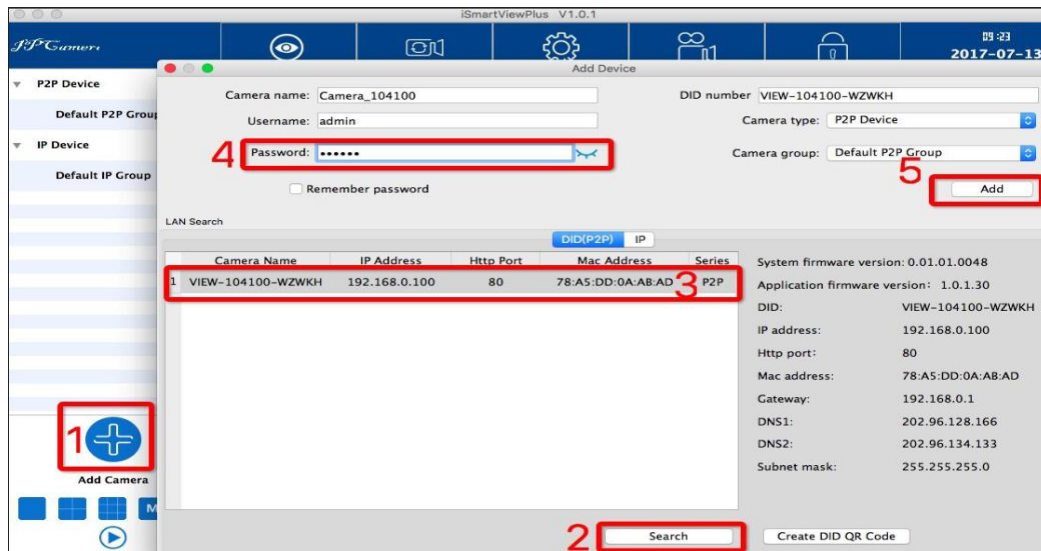
2) Search the camera in Lan, DID number will be searched if use DID(P2P) to search, while Search IP will get IP Address

3) Double-click the searched camera, and the camera information will be filled automatically.

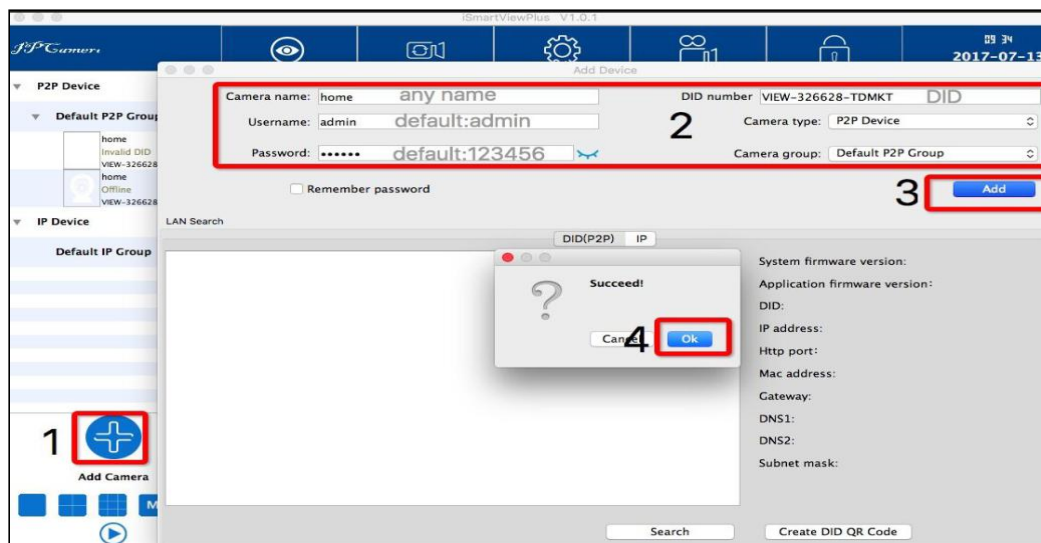
4) Input the camera's password (default is 123456).

5) Hit "Add".

6) "Save Success" will appear, click "OK" to close the dialog.



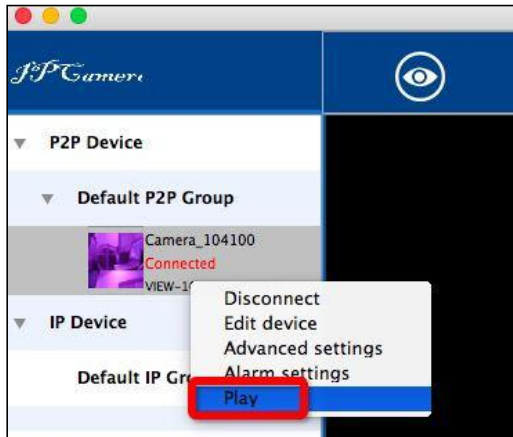
Manually add camera (suitable for outside network)




Play/Stop Video

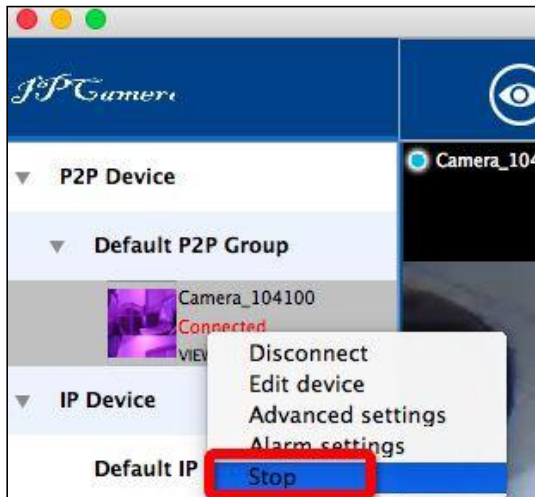
Play Video

When the camera is connected, double-click the camera or right-click and choose "Play" to play the video.

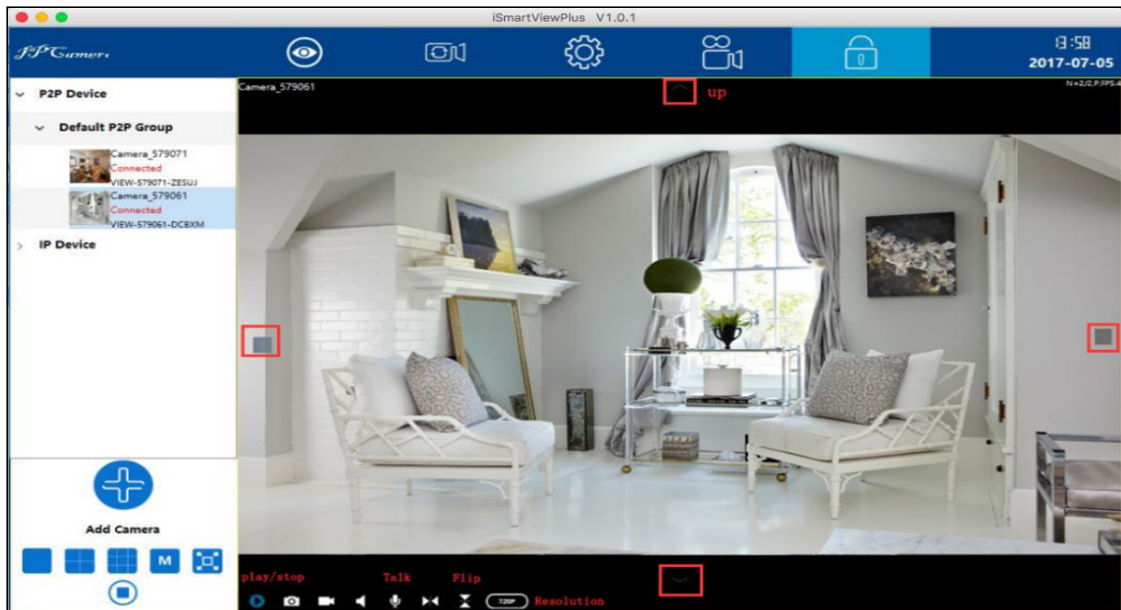


Stop Video

Click  to stop the video or right-click the camera and choose "Stop"



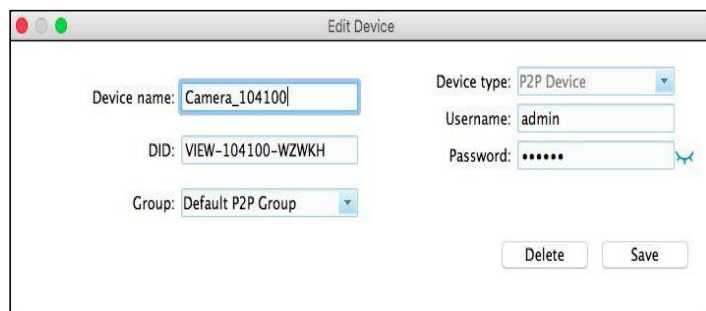
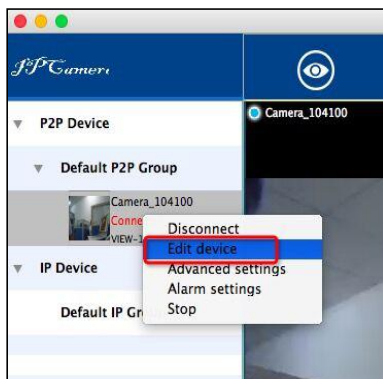
Video Interface



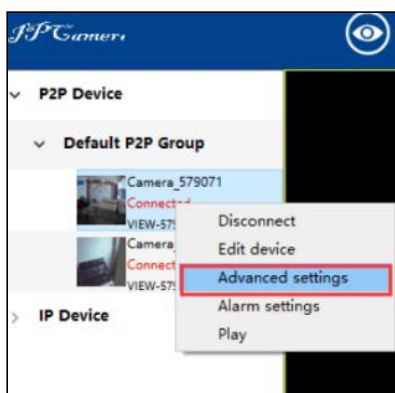
Camera Settings

Edit Device

Right-click the camera info and select "Edit Device", here can change the Device Name and Group; and edit the username and password if input wrong or changed; delete the device or Save the parameters you have edited.

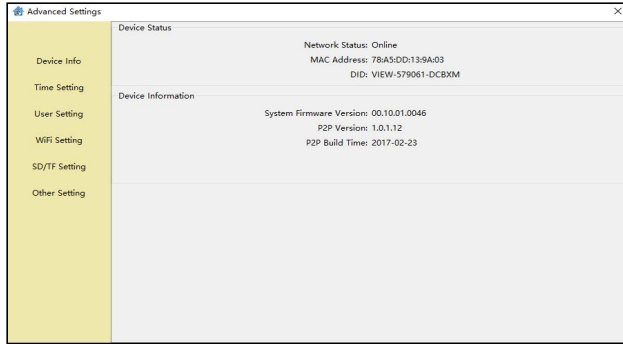


Advanced Settings



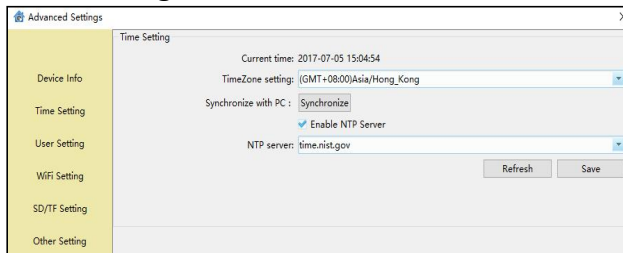
On the Advanced Settings, user can check camera firmware version, set up time, create other account for operator or Visitor, set up WiFi and SD card recording etc.

Device Info



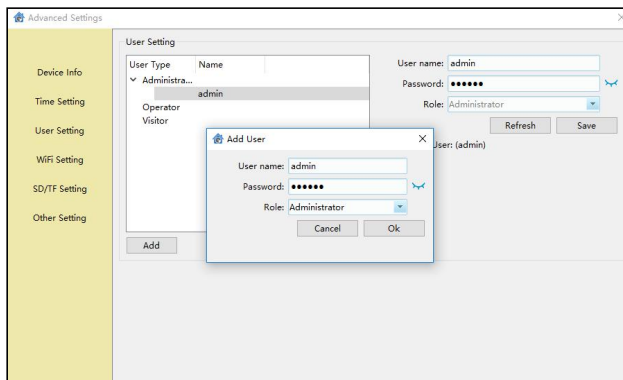
User can check the camera status and Mac address, and check the camera's firmware version.

Time Setting

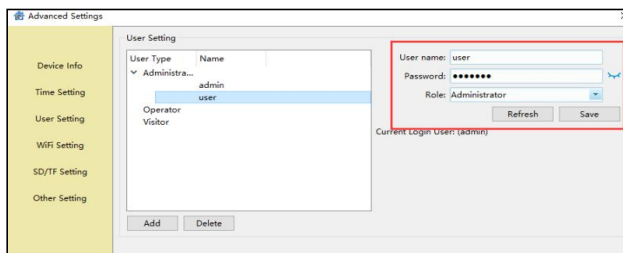


User can select a specific time zone, or sync the time to PC or to a NTP Server

User Setting

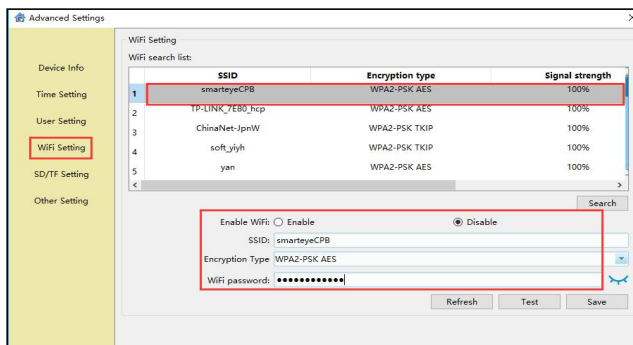


User can create other accounts for family member or friends in User Setting. Add an account with user name and password, and give a right to this account.
 Tips: Administrator: All settings can be edited
 Operator: Can operate all the icons (such as listen, talk, flip/mirror) on the live video page.
 Visitor: Can only watch live video.



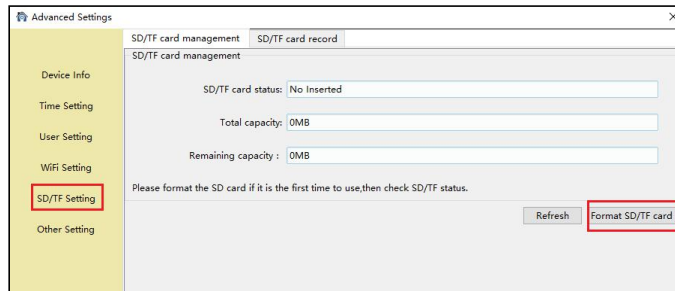
User can also edit the account information, such as change the user name and password and change the role for each account, then Save. And Delete some accounts if you need

WiFi Setting

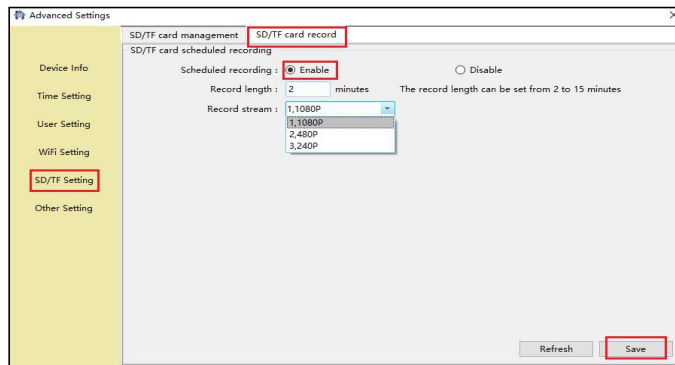


User can set up WiFi for the camera is connected Ethernet cable, or change to other available WiFi. Search the available WiFi, and choose the one you want to connect, then input the WiFi password (click the icon behind to confirm if the password is correct). Save then Test.

SD/TF Setting

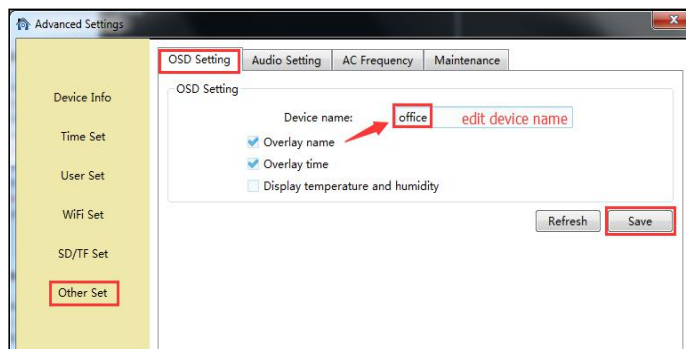


Open the Plan Record, it will record continuously to SD card, each record length can be set between 2-15 minutes. The video stream can be recorded at 1080p(720p), 480p and 240p.



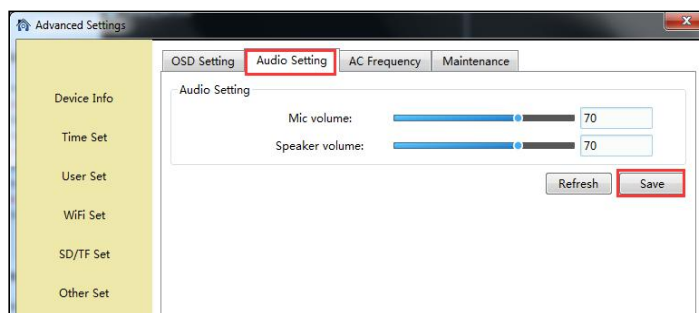
User can record video to SD card. Before recording, please kindly make sure you have inserted a SD card, and format it.

Other Setting



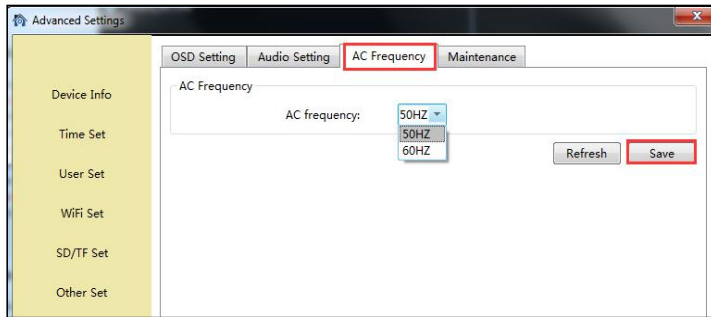
On the OSD setting, users can set up the Overlay name and Overlay time, so user can check name and time on the video screen. If Overlay name and Overlay time and Display temperature and humidity are checked at the same, the Device name will show Temperature and Humidity. Note: The temperature and humidity are unavailable on this model.

Audio



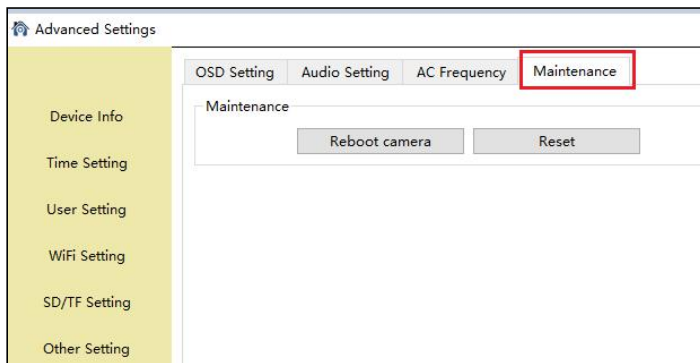
User can adjust the camera's microphone and speaker volume.

AC Frequency



User can adjust the power frequency, Power frequencies include: 50HZ(220V voltage selects 50HZ), 60HZ(110V voltage selects 60HZ), 60HZ used in Japan, Canada etc.

Maintenance



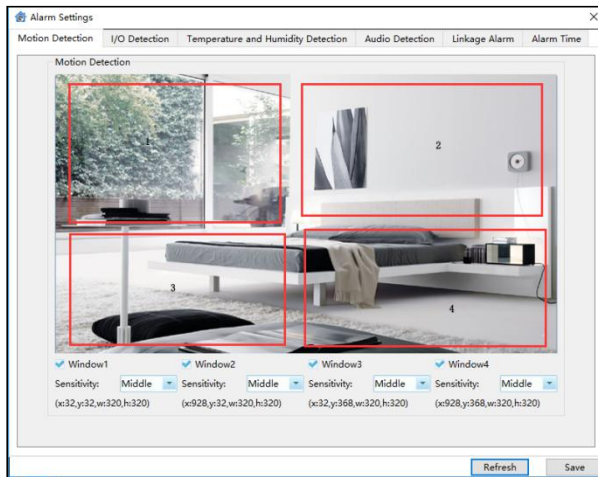
User can reboot and reset (restore) the camera.
 Tips: To reset the camera, the camera will restore to factory setting.

Alarm Setting

In the Alarm Setting, use can set up the Alarm alert.



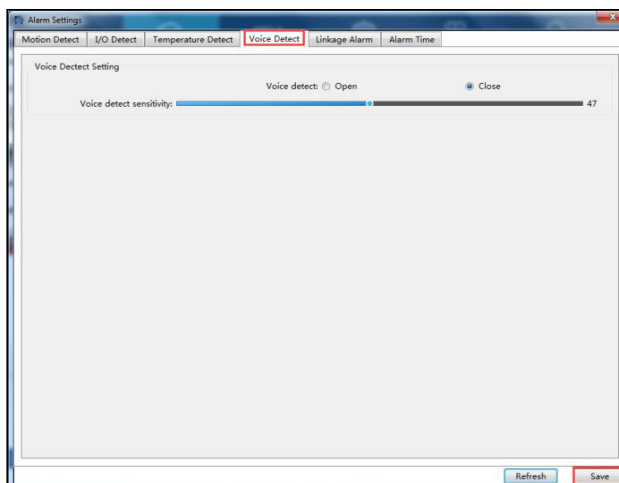
Motion Detection



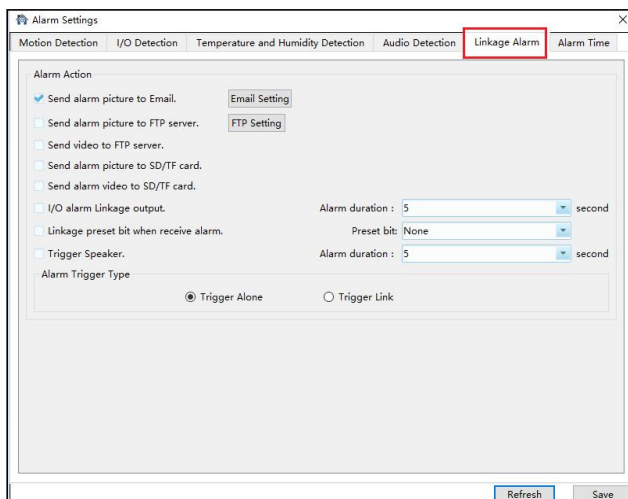
User can set up motion detection area here to narrow the motion detected area to some important places, tick each window, move your mouse to the lower right corner and drag it can adjust the size of the window, and can move it to the needed area. User can choose the sensitivity from low, middle and high. The high sensitivity will be easy to get alarm.

I/O Detection and Temperature Detection are disabled in this model.

Audio Detection



Alarm Action

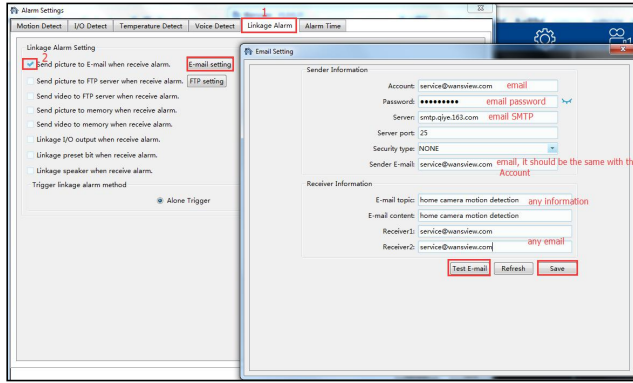


If user set up alarm, the camera will execute a variety of alarm actions at linkage: snap to email, snapshot and video to FTP, snap and video to SD card.

And if you connect external I/O alarm device, it can trigger alarm too.

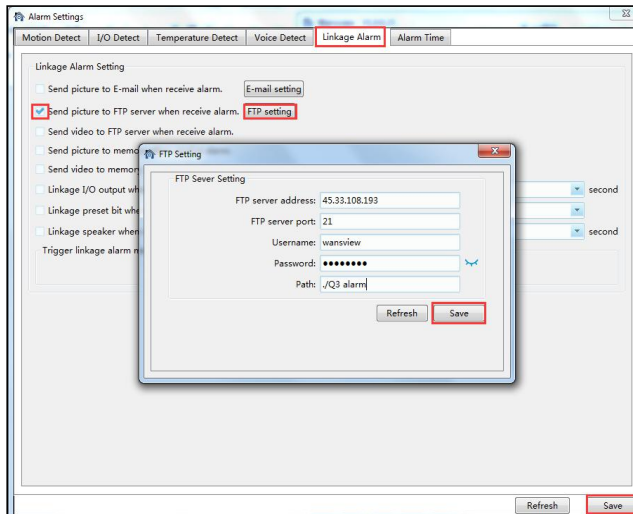
Tips: The method of "Trigger Alone" and "Combination Trigger", if the user starts up an audio detection and motion detection, the "Combination Trigger" will be started up. Only when any abnormality is detected simultaneously by the audio detection and motion detection will the alarm action be triggered.

Email setting



Sender: your email address
 Smt Server: such as smtp.gmail.com etc.
 Smt port: 465 or 587
 SSL: SSL
 User name: your email address, the same with sender
 Password: your email password, if you are using Gmail, please generate an app password, and using the app password.
 Download a document from our website on how to set up app password.
 Receiver: any email address
 After all the information are filled in, click "Save" and "Test" the email to see if the email setting is successful or not.

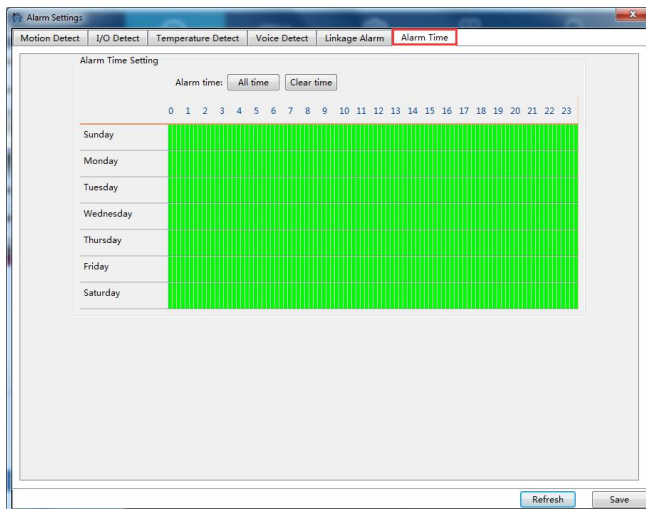
FTP Setting



FTP Server Address: This field allows the user to designate an IP address or DDNS address for the FTP server.
 Server Port: This field allows the user to designate the port number for the FTP server.
 User Name: Input FTP user name.
 Password: Input FTP password.
 Path: Specify a folder for storing video and pictures, for example: ./Q3 alarm

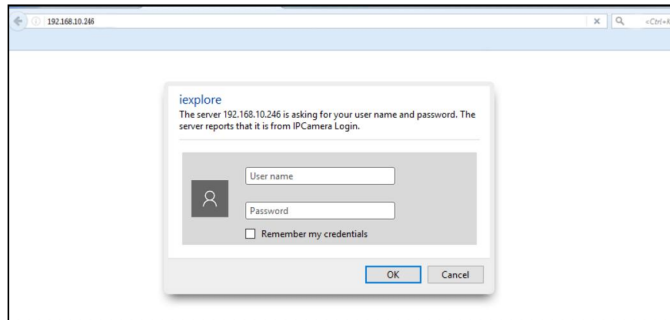
Note: If you want to save the alarm picture and video to FTP, you must build an FTP sever, then create an FTP account with a password (not an anonymous account) on your FTP server and FTP account must have create and delete file rights.

Alarm Time



After setting the type of alarm and alarm action, please set up the alarm time, the alarm action can only be triggered when armed. The Green color means the time is armed. User can choose "All Time" or "Clear Time", and can also choose a specific time. 15 minutes for an interval. The user can drag the mouse to perform continuous selection of the arming time.

Web Access

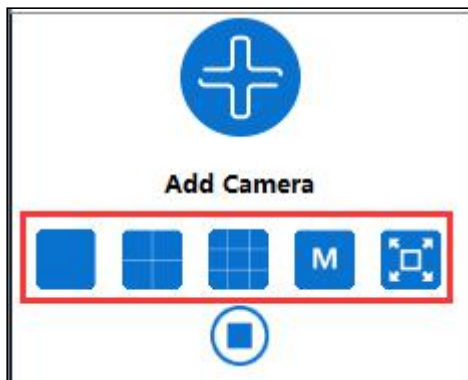


If the camera is added via IP Address, right click and select web access can access the camera with default browser.

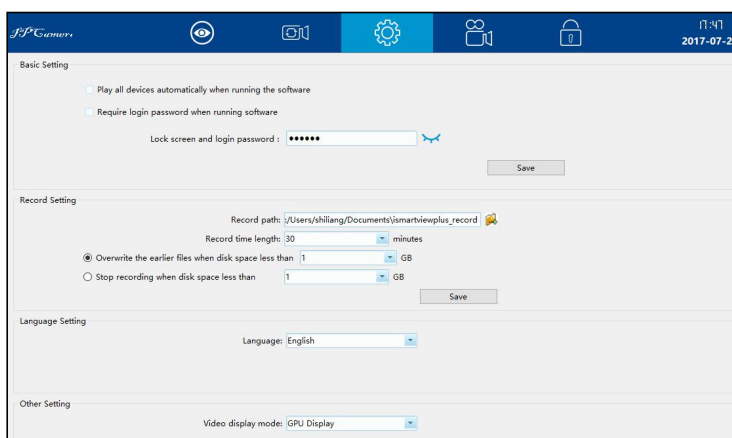
Tips: User name: admin Password:123456

Multi-View

User can monitor multiple cameras at the same time, 4-screen, 9-screen, M(6, 8,16, 25, 36) and full screen can be set up according to different demands.



Local Setting



Base setting:

User can set up lock screen password in case you won't let others to see the video.

Record setting:

User can set the Record path, and each recorded video can be set from 5-60 minutes.

Recorded video can be overwrite or stopped if the computer disk storage is not enough.

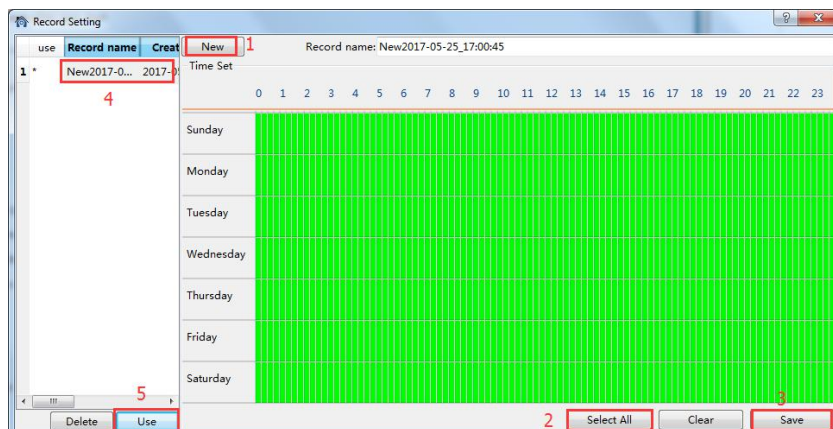
Language setting:

The language can be switched from English and Chinese.


More Languages will be added very soon.

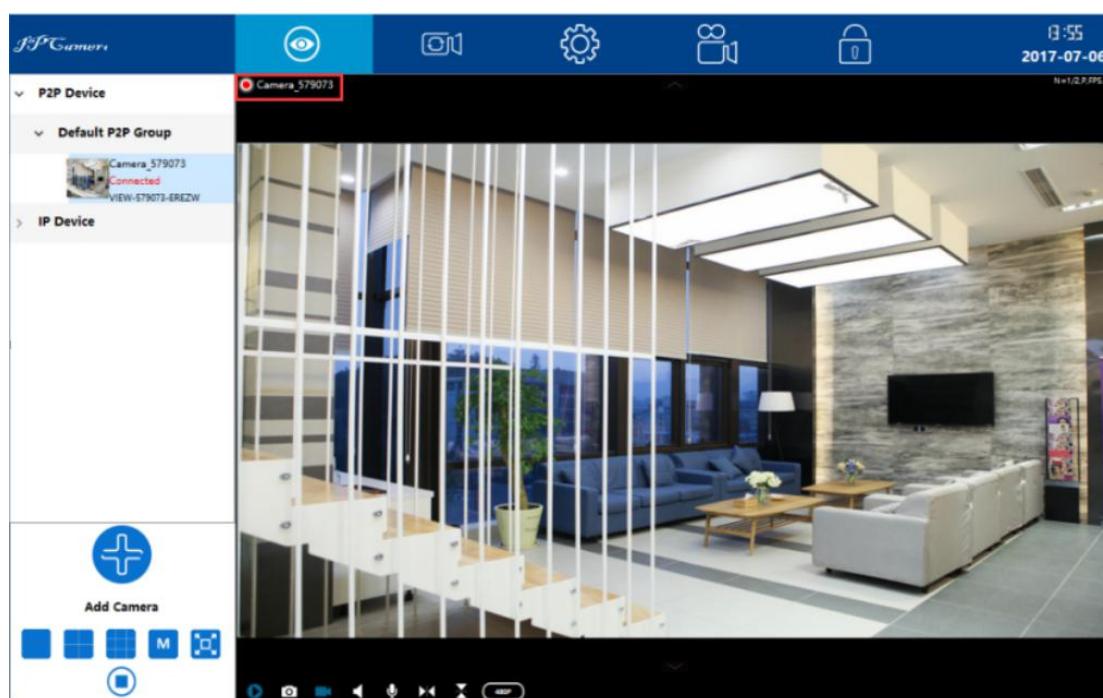
Scheduled Recording

Before recording to your local computer, please make sure you set up the Record Path on the “Local Setting”. Then follow the below steps to set up the recording:



- 1: Click “Create” to create a Record name, it will give you a name automatically(combination of date and time), user can edit the name.
- 2: Select time: User can “select all” if want to record 24/7, and clear it to choose a specific time by dragging or single-click the time interval.
- 3: Save: Save the record name and time interval you set up.
- 4: Double-click the Record name to choose it as the record plan.
- 5: Apply: Click “Apply”, a * will appear in front of the Record plan, it means the scheduled recording is working.

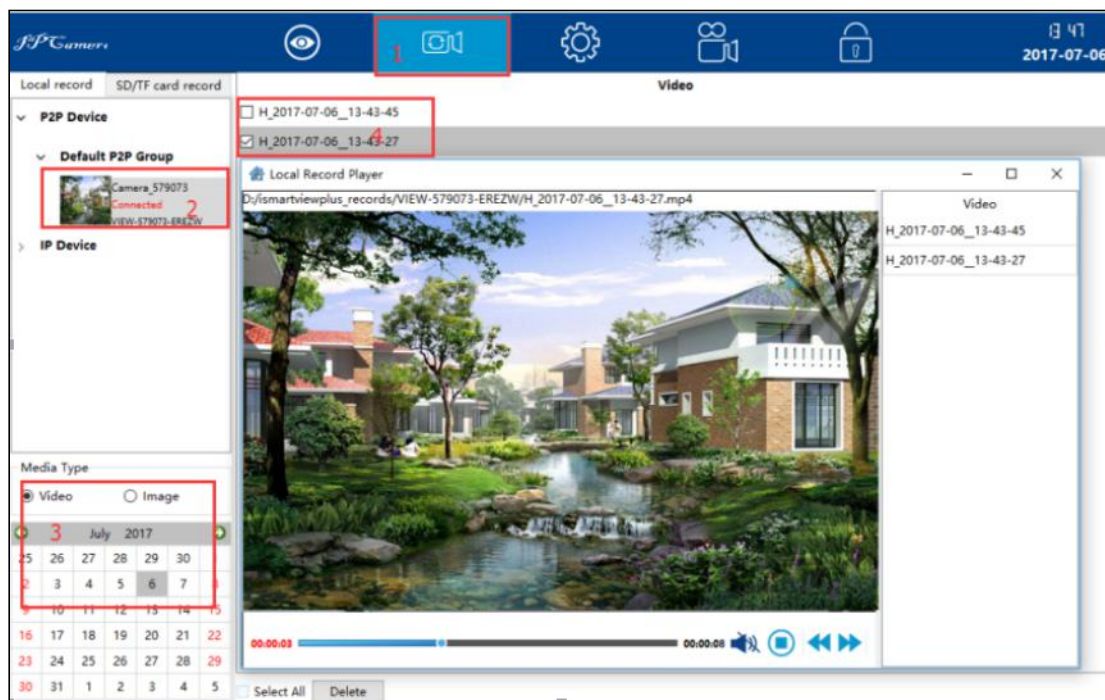
The  icon will be shown on live video screen, it means the camera is recording automatically)



Playback

On "Playback" page, user can playback the recorded videos on the local disk and SD card.

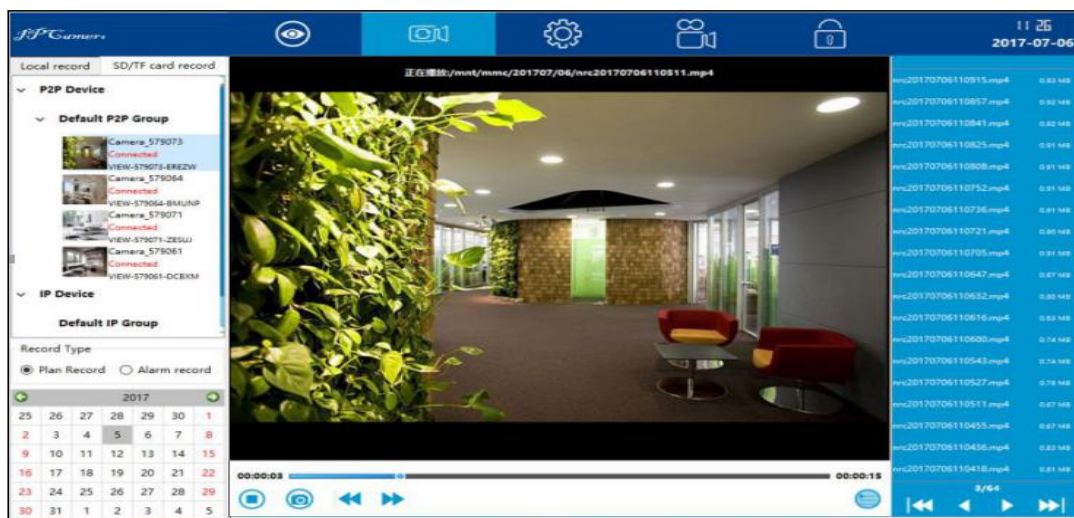
Playback Local Record.




- 1) Choose Local Record and selected the camera you want to check.
- 2) Select the Media Type (Video or Image)
- 3) Select the video in an exact date you want to playback
- 4) Recorded video list will be shown (Video starts with "P" for Scheduled Recording, and "H" for Manually Recording)
- 5) Double-click the recorded video name, video will be broadcast.

User can select a certain or all the video and delete it from the list and the record path.

SDCarRecord



- 1) Choose SD/TF record and selected the camera you want to check.
- 2) Select the Media Type(Plan or Alarm)
- 3) Select the video in an exact date you want to playback

- 4) Recorded video list will be shown, if it is not shown, please tap  to show the list (Video starts with "nrc" for Scheduled Recording, and "arc" for alarm Recording)
- 5) Double-click the recorded video name, video will be broadcasted.

Lock

Lock the screen if you don't want to operate it or prevent others to operate the camera.
The default lock password is 123456.

